



Parking Changes at Stanford Shopping Center

Parking at certain Stanford Shopping Center locations is reserved for customers only, effective May 20.

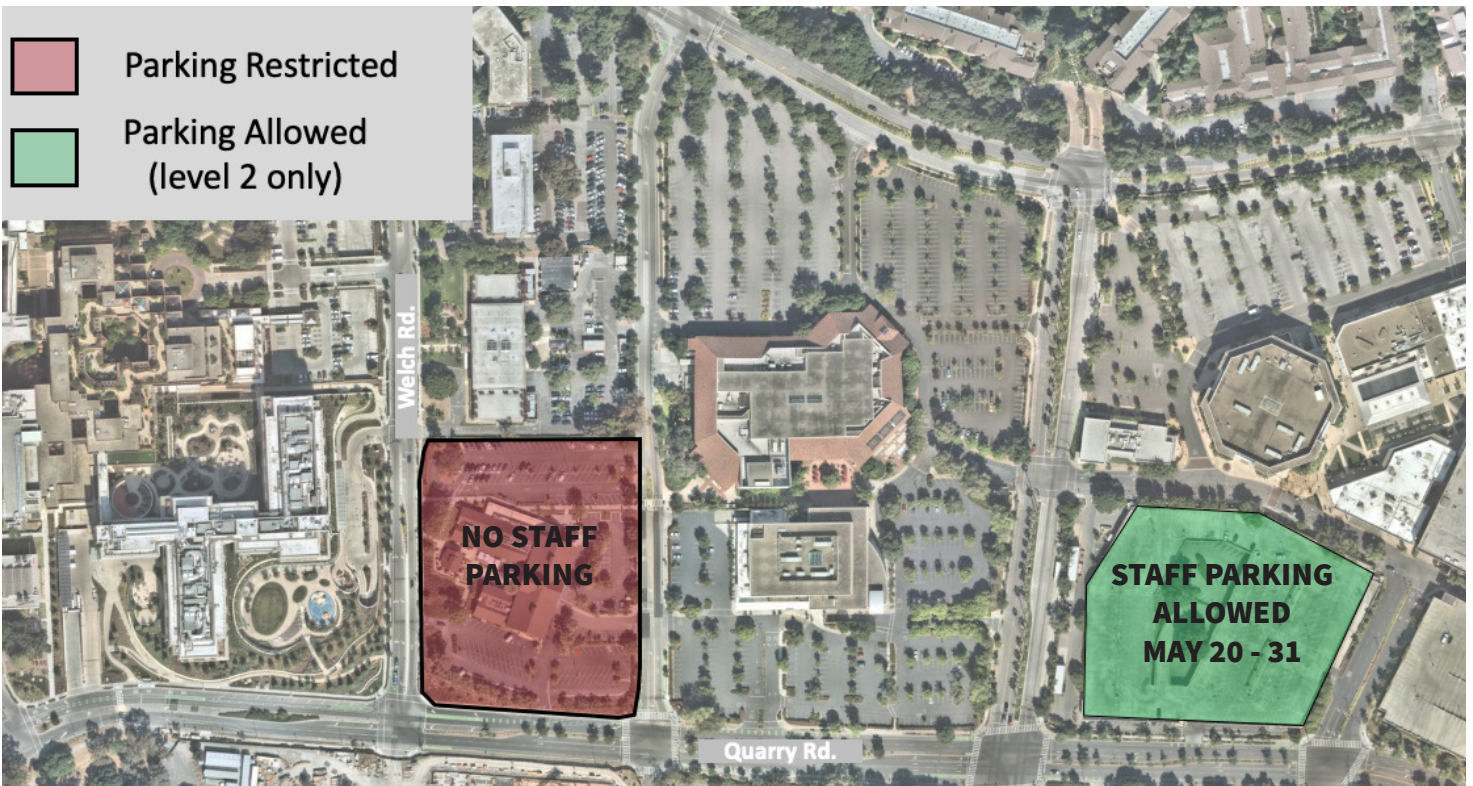
Parking at Stanford Shopping Center

The County of Santa Clara has approved Stanford Shopping Center to operate curbside pickup. As a result, effective Wednesday, May 20, parking at certain Stanford Shopping Center locations is reserved for customers only. Stanford Health Care, Stanford Children’s Health, and School of Medicine commuters should not park in the following locations:

- Container Store
- Crate and Barrel
- Nordstrom

Instead, Stanford Shopping Center will allow Stanford Health Care, Stanford Children’s Health, and School of Medicine commuters to park on level 2 of the parking garage near Neiman Marcus through May 31.

See the map below:





Parking Changes at Stanford Shopping Center

Parking at certain Stanford Shopping Center locations is reserved for customers only, effective May 20.

On-Site Parking Policies

Until further notice, parking permits are not required to park in 'A' & 'C' permit spaces in university-operated lots and garages. For more information about the temporary change to parking enforcement, please see the [Stanford University announcement](#).



As a reminder, parking enforcement continues in the areas below:

- **Parking restrictions in special zones**, such as disabled parking, red zones, fire lanes, and special-permit-only spaces will continue to be enforced 24 hours a day, 7 days a week.
- **Parking at Welch Road Properties** is restricted to occupants working at the Welch Road buildings with approved permit access only.
- **Pasteur Staff Garage (PSG)** requires a daily permit. This permit can be purchased for \$8 via the Passport Parking App (Zone #1650) and are available on a daily first-come, first-served basis.
- **All Hospital patient and visitor parking areas:** To ensure that parking spaces are readily available for patients coming to the medical campus, parking is still enforced in Hospital patient and visitor parking areas. This includes the Pasteur Visitor Garage, Lucile Packard Children's Hospital Main and West Garages, and the Blake Wilbur Surface Lot.

For questions about hospital parking permits and policies, please contact Stanford Health Care Transportation Services.