

[View this email in your browser](#)



Stanford Medicine Transportation Services

Transportation & Parking News

In This Issue

January 24, 2024

1. *NEW* Stanford Medicine Guaranteed Ride Home Program
2. Commute Stress-Free with Park & Ride Commuter Busses
3. Internal Mobility Career Event - Wednesday, January 31, 2024

***NEW* Stanford Medicine Guaranteed Ride Home Program**

Commute with confidence when using a qualifying sustainable transportation mode knowing you have a guaranteed back-up ride during unexpected times.



GUARANTEED Ride Home Program

—
Your Back-Up Ride
In Unexpected Times
—



Eligible Stanford Health Care & Lucile Packard Children's Hospital staff can get a Guaranteed Ride Home for qualifying events up to six times per year!

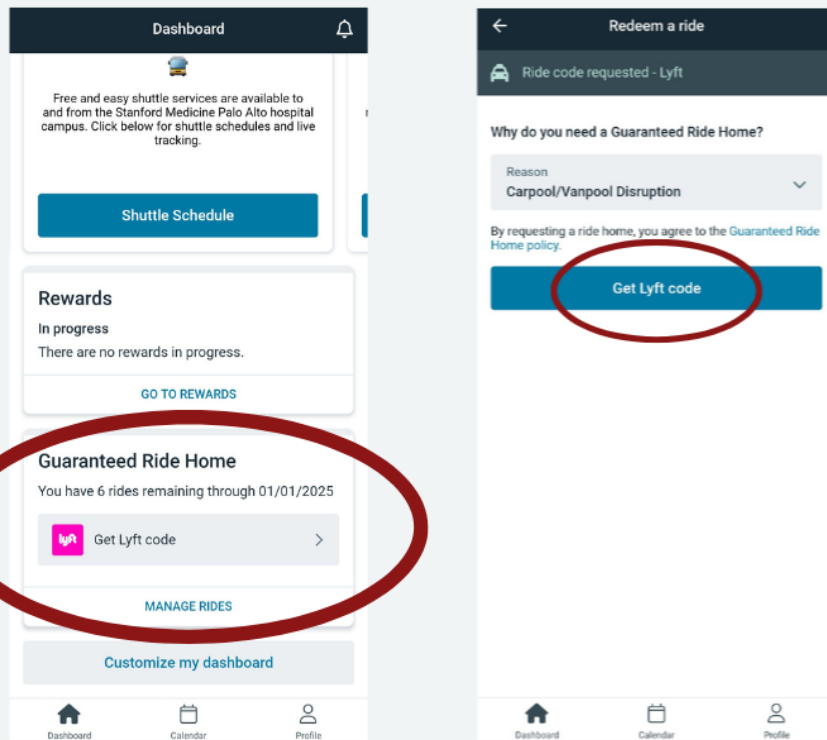
Looking to take transit, carpool, or bike to work, but worried about what you would do in an emergency? The Guaranteed Ride Home (GRH) program is here for you so you can have a back-up ride during unexpected times!

Within the Luum Platform, eligible Stanford Health Care & Lucile Packard Children's Hospital staff working at the Stanford Medicine Palo Alto campus can use Guaranteed Ride Home for qualifying events up to six times per calendar year.

How to Request a GRH

Requesting a guaranteed ride home on the Luum App is easy!

1. On the home dashboard of the Stanford Medicine Transportation Services Luum app, scroll down to the "Guaranteed Ride Home" section
2. Tap on the "Get Lyft Code" button
3. A drop-down will pop up for you to specify the reason you need a ride home
4. Once you select your reason, tap "Get Lyft Code" to receive a Lyft code



GRH Trip Qualifications:

- Qualifying trips must start at the staff member’s work location at the Stanford Medicine Palo Alto campus and end at home, a transit stop, or the place where their car is parked (e.g. park & ride lot or carpool partner's home).
- To qualify for a guaranteed ride home, you must have arrived at work by using an alternative transportation option such as the commuter bus, transit, or carpool on the day of the emergency.
- Brief side trips on your way home that have to do with the emergency are allowed (e.g. picking up a sick child at school or daycare, getting a prescription at a pharmacy, etc.)

To see if you are eligible, please click on the link below:

- [GRH - SHC](#)
- [GRH - LPCH](#)

Explore the Luum Commuter Platform

Get the Luum app on your phone by clicking one of the following links:

- [Luum for iPhone](#)
- [Luum for Android](#)

To access your Luum portal via webpage, click on the button of your Stanford Medicine entity below.

SHC Luum Portal

LPCH Luum Portal

Commute Stress-Free with Park & Ride Commuter Busses

Enjoy free parking and a comfortable ride to the Stanford Medicine Palo Alto campus with South Bay and East Bay Park & Ride options.



Stanford Medicine's Santa Clara and Campbell Park & Ride lot and shuttle programs are convenient options for South Bay commuters heading to the Stanford Medicine Palo Alto campus.

Commuting from the South Bay or East Bay?

Stanford Health Care and Lucile Packard Children's Hospital staff can enjoy free parking and a comfortable ride to the Stanford Medicine Palo Alto campus with the Park & Ride commuter bus options below:

Stanford Medicine Park & Ride Lot and Shuttle Program

Stanford Medicine's Santa Clara and Campbell Park & Ride programs offer free parking, free wi-fi on shuttles, and convenient fuel delivery with Yoshi.

Both lots offer direct shuttles to Lucile Packard Children's Hospital and 500 Pasteur during peak commuting hours.

Simply park your car at the Park & Ride lot, scan your staff ID badge and board the commuter bus!

1. [Santa Clara Park & Ride Lot and Shuttle Program](#)

- The Santa Clara Park & Ride lot is located at 2945 Tasman Drive, Santa Clara, CA (near Levi's Stadium).
- The Santa Clara shuttle operates during peak morning and afternoon/evening commuting hours, with morning trips leaving Santa Clara between 4:20 AM - 8:20 AM, and evening trips leaving the Stanford Medicine Palo Alto campus between 2:30 PM - 8:25 PM.
- A free parking hangtag is required to park in the Santa Clara Park & Ride lot. Apply for your free parking hangtag permit [here](#).

2. [Campbell Park & Ride Lot and Shuttle Program](#)

- The Campbell Park & Ride lot is located at 600 E. Hamilton Ave, Campbell, CA - conveniently located off of Highway 17.
- The Campbell shuttle operates during peak morning and afternoon/evening commuting hours, with morning trips leaving Campbell between 5:10 AM - 8:20 AM, and evening trips leaving the Stanford Medicine Palo Alto campus between 2:30 PM - 7:30 PM.
- A free parking hangtag is required to park in the Campbell Park & Ride lot. Apply for your free hangtag permit [here](#)

Earn a FREE detail car wash! Staff who park at either Stanford Medicine Park & Ride lots at least 16 times in 1 month can earn a free car wash (\$89 value).**

Currently, Yoshi offers a free car wash if you park your car at a Park & Ride lot and take the shuttle for a minimum of 12 days a month. **Effective February 1, 2024, the parking minimum eligibility for the Yoshi free car wash benefit will be adjusted from 12 days to 16 days.

The value of the car wash will be taxable as imputed income. Claiming the free car wash is optional, and tax will not apply if the car wash is not accepted. Please reach out with any questions regarding the tax impact.

Ardenwood Park & Ride - East Bay

- East Bay staff can park for free at the Ardenwood Park & Ride lot (Ardenwood Blvd. & Hwy. 84), which is located in Fremont.

- This lot connects with transbay commuter busses to the Stanford Medicine Palo Alto campus and the Stanford University campus.

For more information, view the flyers here:

[Alameda-Contra Costa \(AC\) Transit Line U & Marguerite Line AE-F](#) | [Marguerite Line - East Bay Express \(EB\)](#) | [Line Dumbarton \(DB\)](#).

Lines AE-F and EB are free to all riders, Line U is free with your Stanford Medicine ID, and the DB line is free with a Stanford Medicine provided [Clipper Card](#).

Explore other shuttle programs offered at Stanford Medicine by clicking the button below.

[EXPLORE STAFF SHUTTLE PROGRAMS](#)

Internal Mobility Career Event - Wednesday, January 31, 2024

Stanford Medicine Transportation Services will be at the Internal Mobility Event (1/31) from 12:00 PM to 5:00 PM. There will be FREE gifts for sustainable commuters and carpoolers using the [Pasteur Staff Garage \(PSG\) carpool program!](#)



Got transportation questions? Come to the Stanford Medicine Transportation Services table at the Internal Mobility Career Event!

Stanford Health Care (SHC) Human Resources (HR) Talent Acquisition & Contingent Workforce team will be hosting the Internal Mobility Careers event at the **500 Pasteur (500P) Assembly Hall - Wednesday, January 31, 2024 from 12:00 PM to 5:00 PM.**

Get personalized career advice and resume review from recruiters, explore various educational resources, engage with current leaders for insights on career growth, join employee groups, and create a career vision board.

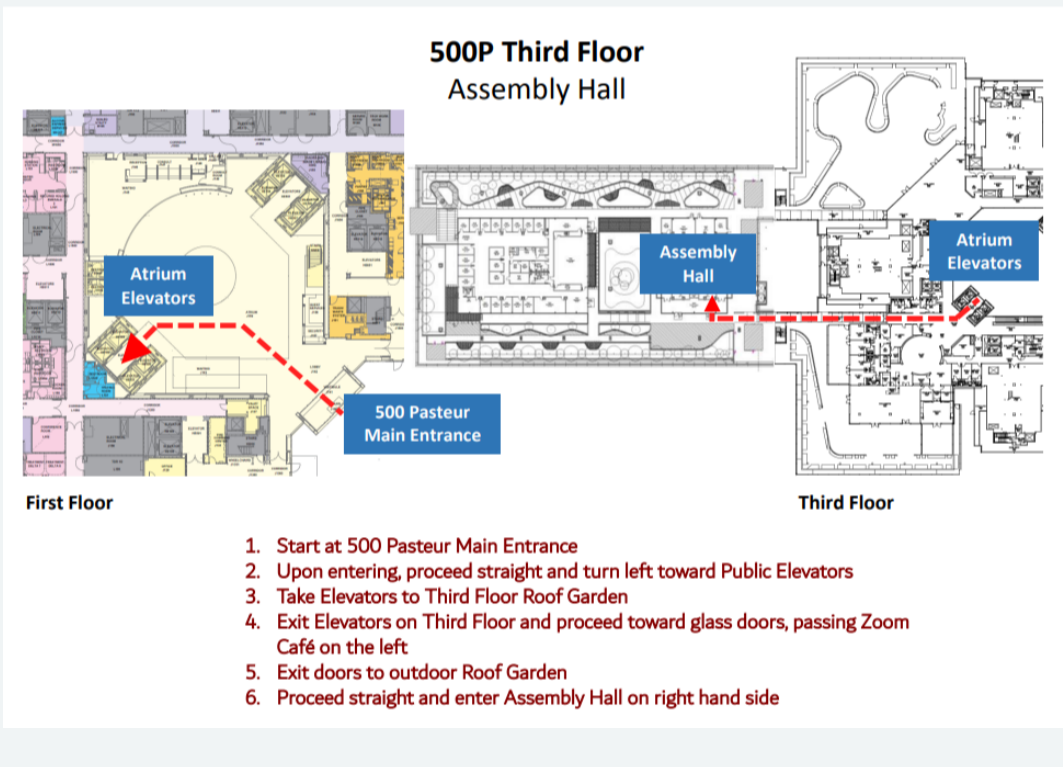
To RSVP to the event, [click here](#).

Stanford Medicine Transportation Services will be tabling at the event and will be passing out custom tumblers and water bottles.

The tumblers will be available for carpoolers using the [PSG carpool program](#) and the water bottles will be available for commuters who choose to commute sustainably!



How to get to the 500P Assembly Hall



[CLICK HERE TO RSVP](#)



Try Out One of the FREE Park & Ride Lot and Shuttle Programs to the Stanford Medicine Palo Alto Campus

The Santa Clara Park & Ride lot (near Levi Stadium) and the Campbell Park & Ride lot (formerly the old Fry's Electronics lot) provide free parking and transportation for staff at the Stanford Medicine Palo Alto hospital campus. Enjoy easy, free parking and a direct shuttle ride that connects directly to Lucile Packard Children's Hospital and 500 Pasteur!

For more information, view the flyers here:

[Santa Clara Park & Ride](#) | [Campbell Park & Ride](#)

Commuting from the East Bay?

East Bay staff can park for free at the Ardenwood Park & Ride lot (Ardenwood Blvd. & Hwy. 84), which is located in Fremont. This lot connects with transbay commuter busses to the Stanford Medicine Palo Alto hospital campus and the Stanford University campus.

For more information, view the flyers here:

[Alameda-Contra Costa \(AC\) Transit Line U & Marguerite Line AE-F](#) | [Marguerite Line - East Bay Express \(EB\)](#) | [Line Dumbarton \(DB\)](#)

Lines AE-F and EB are free to all riders, Line U is free with your Stanford Medicine ID, and the DB line is free with a Stanford Medicine provided [Clipper Card](#).

Stanford Medicine Transportation Services is here to help if you have any questions. Visit the Stanford Medicine Transportation Services [website](#), or reach out via email, phone call, or **text!** The Hospital Transportation Operations Center phone line is operated **24/7**, so you can reach out any time.

 Share the Hospital Transportation Services Newsletter!

Stanford Medicine Transportation Services

<https://stanfordmedicinetransportation.org/>

TransportationServices@stanfordhealthcare.org

Call or Text: 650.736.8000

Want to change how you receive these emails?

You can [unsubscribe from this list](#).